



Integrating School Mental Health Practices

CRCG/SOC Conference
July 26, 2023



Julie Wayman, MSSW
Director,
Mental & Behavioral Health



Ashton Millet, M. P. P.
AWARE Expansion Consortium
Coordinator



Tammy Gendke, MA LSSP
AWARE State Coordinator

- 1) AWARE Grant and Title IVA Behavioral Health Capacity Building Background**
- 2) The Why?**
- 3) Legislation**
- 4) TEA Mental Health and Wellness Resources**

By the end of this session, participants will have a deeper understanding of the importance of providing mental health supports in the school and community settings.

By the end of this session, participants will know where to find additional resources to address mental health supports.



Project AWARE Texas

Where We Started & Where We Are Headed



AWARE TEXAS Grant Partners

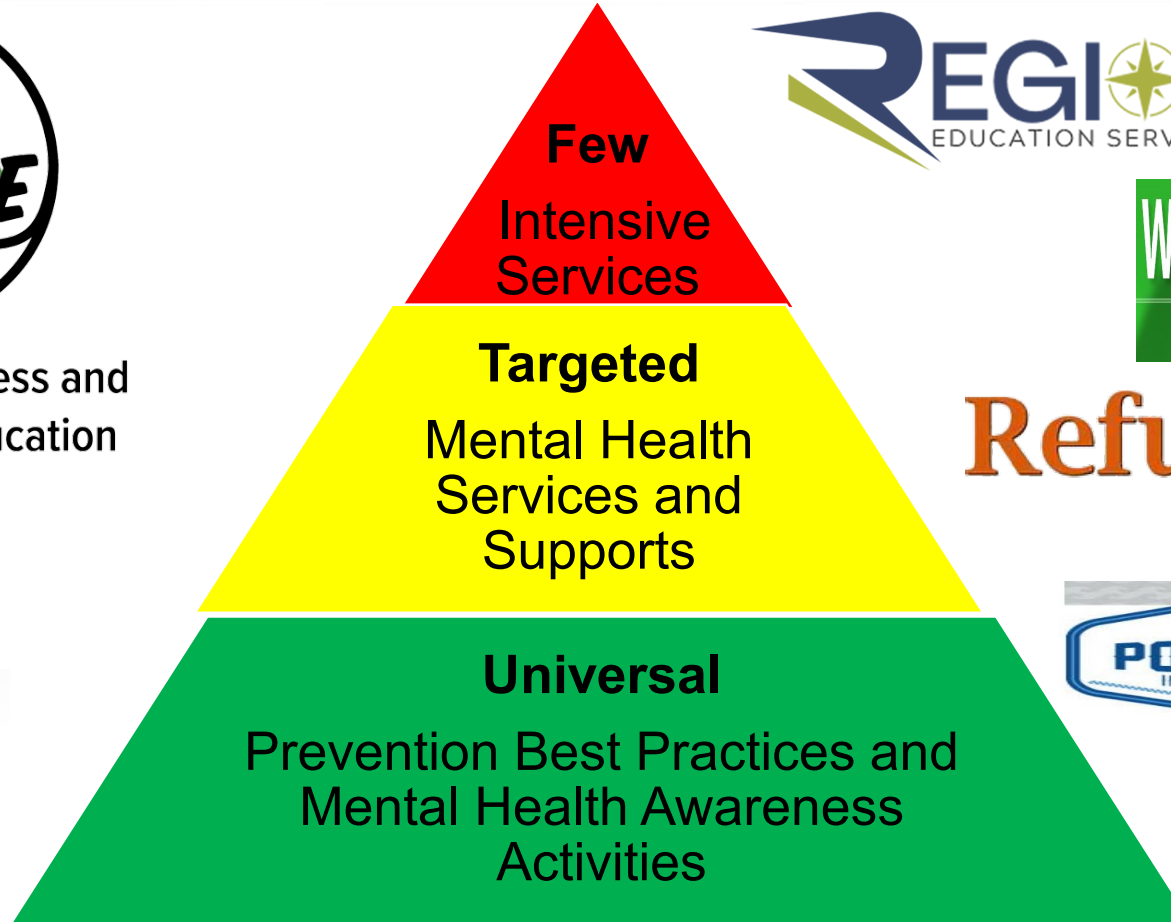
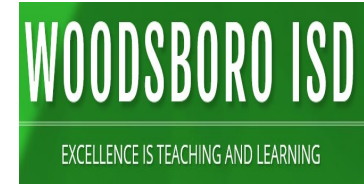
Advancing Wellness and Resiliency in Education

SAMHSA Grants

Collaboration & PLC



Advancing Wellness and Resiliency in Education



Evidence-Based Practices

Direct MH Services



- 1** **Increase and improve access** to culturally competent and developmentally appropriate school and community-based mental health services.
- 2** **Increase awareness and identification** of mental health issues among adults working with young people.
- 3** **Help students develop skills** that promote resilience, self-regulation and pro-social behaviors, avert development of mental health disorders and prevent youth violence.
- 4** **Develop an infrastructure** that will sustain services at LEA/ESC's and *build statewide capacity for promoting mental health awareness, wellness, and evidenced-based practices.*

Project AWARE Texas Implementation

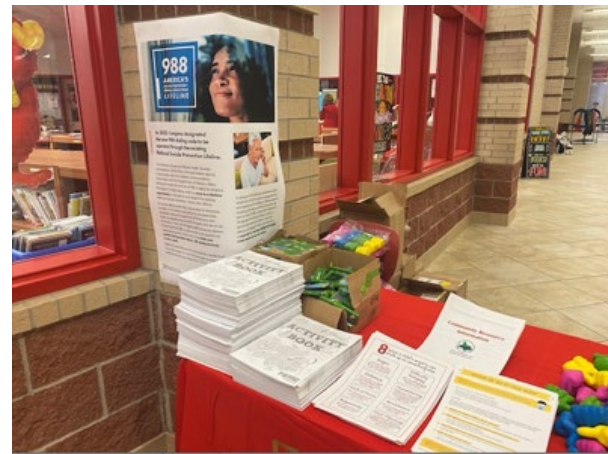


- ✓ **Mental and behavioral health specialists in schools**
- ✓ **PBIS/Integrated Systems Framework (ISF) for Mental Health and Comprehensive School Mental Health Systems**
- ✓ **School climate surveys**
- ✓ **SHAPE Assessment- National measure that helps schools build a comprehensive SMH System (www.schoolmentalhealth.org/SHAPE)**
- ✓ **Training in evidence-based practices (CBITS, CPS, PAX Good Behavior Game, YMHFA, Trauma and Mindfulness Practices, Psychological First Aid for Schools, other)**
- ✓ **Comprehensive Service Delivery Plan for SMH (Planned in an MTSS)**
- ✓ **Mental health awareness training**
- ✓ **Screening for early identification of mental/behavioral health needs**
- ✓ **Prevention, mental health interventions and supports, treatment provided school-based and community-based through referral pathways**
- ✓ **School/Parent/Community Partnerships**

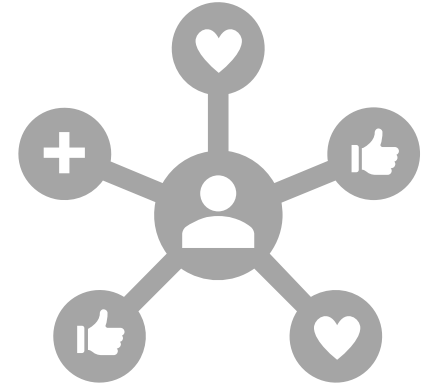
AWARE Team

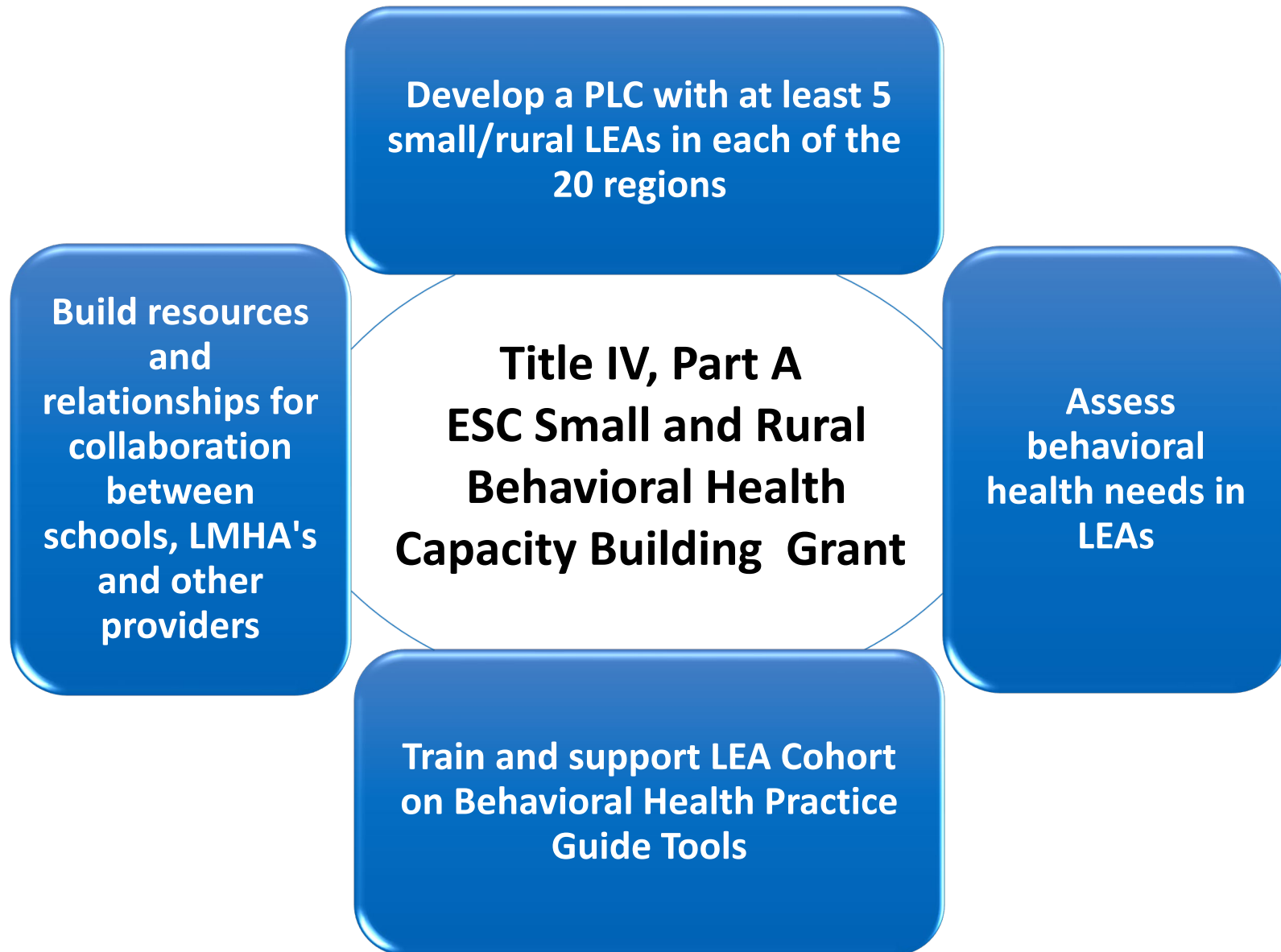


Advancing Wellness and Resiliency in Education

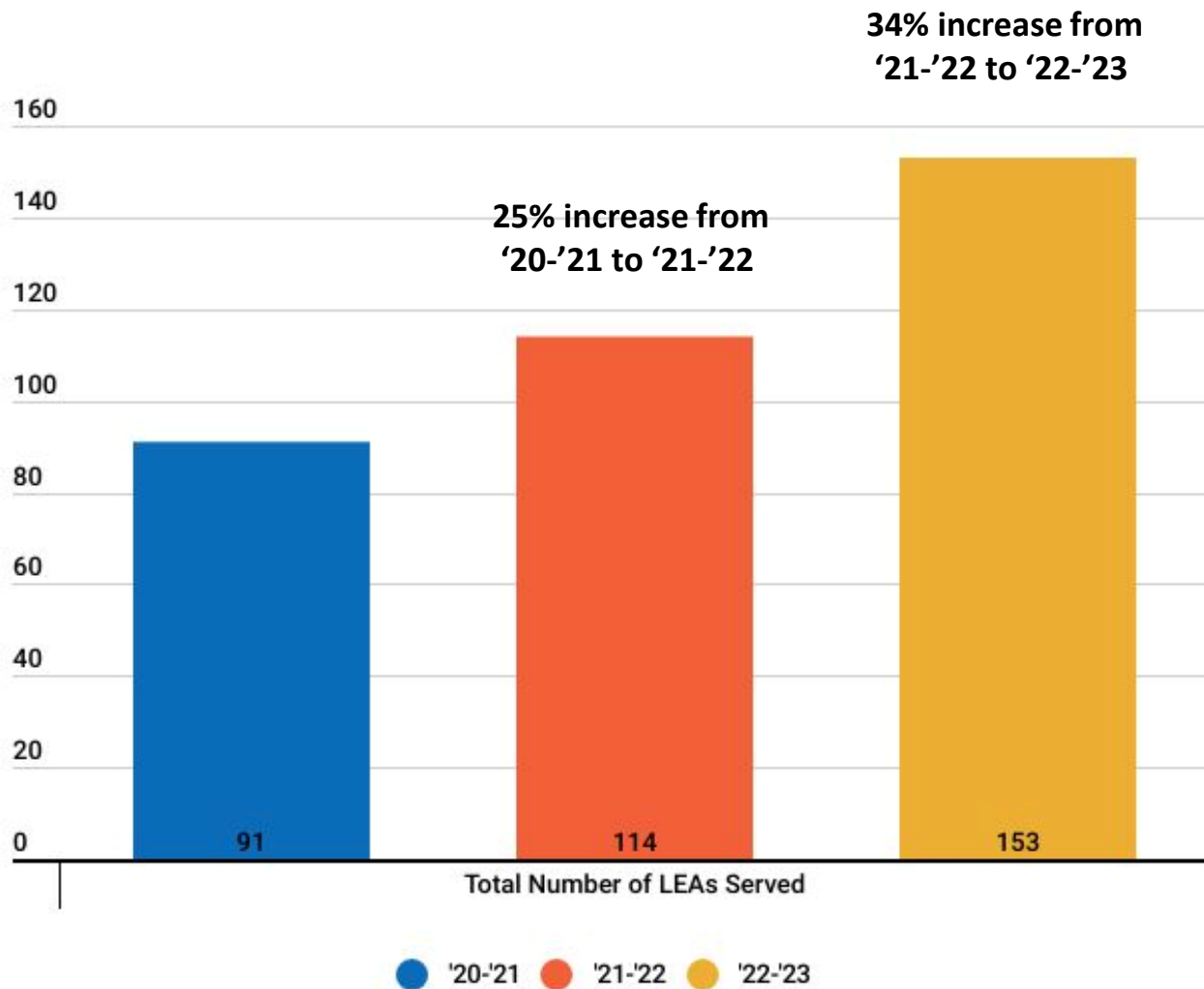


- ❖ **AWARE Texas Expansion LEA Partners:** Elgin ISD, Manor ISD, San Marcos ISD
- ❖ **Training and Technical Assistance Support – LEA Coach:** ESC 13
- ❖ **LMHA Partners:** Bluebonnet Trails Community Services, Hill Country Mental Health and Developmental Disabilities Center, Integral Care
- ❖ **AWARE State Leadership Team:** TEA – Project Coordinator; HHSC – Project Co-Coordinator; Texas Institute for Excellence in Mental Health at UT Austin – Project Evaluator





Small and Rural Behavioral Health Capacity Building Grants Title IVA- Data Highlights- Number of LEAs Served



In total, ESCs served 53 more LEAs from Mar. '22 to Feb. '23 than the baseline expectation of 100 LEAs served.

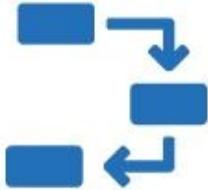
Over the last 3 years, ESCs have served on average, 20% more LEAs than the baseline expectation of 100 LEAs served.

Data Highlights-Key activities accomplished by ESCs from Mar. 2022 – Feb. 2023



550

Total Number of New Resources Identified



87

Total Number of Comprehensive Service Delivery Plans Completed or Updated



83

Total Number of Campuses that Conducted School Climate Surveys



86

Total Number of Completed Needs Assessments



82

Total Number of SHAPE Assessments

PLC Topics Covered

Total number of PLC trainings: **514**

of Tier 3 PLC trainings

115

of Tier 2 PLC trainings

201

of Tier 1 PLC trainings

320

160



Total number of PLC trainings on staff mental health & wellness

- Mental Health Needs (i.e. anxiety, depression, grief, trauma) Interventions, services and support for identified students
- Telehealth Resources (TCHAT)
- Goal Setting with Students, Behavior Tracking and Behavioral Threat Assessments

- Relation Centered Learning & Restorative Circles
- Parenting Courses
- Group Early Interventions for students at risk

- Needs Assessment, SHAPE Assessment, Resource Mapping & Funding
- Universal Screenings & Climate Surveys
- Bullying Prevention, Suicide Prevention, Trauma Informed Care, and Staff Wellness



The Why

A Contextual Theory Example: Maslow's Hierarchy of Needs



Teaching and Learning occurs in the context of:

- human development
- the person in the environment
- the person in their relationships
- the person's vision of self and for their future
- the whole child

Research: Trauma Informed Practices Lens A Trauma Informed Approach in Schools for Building Resilience and Well-being

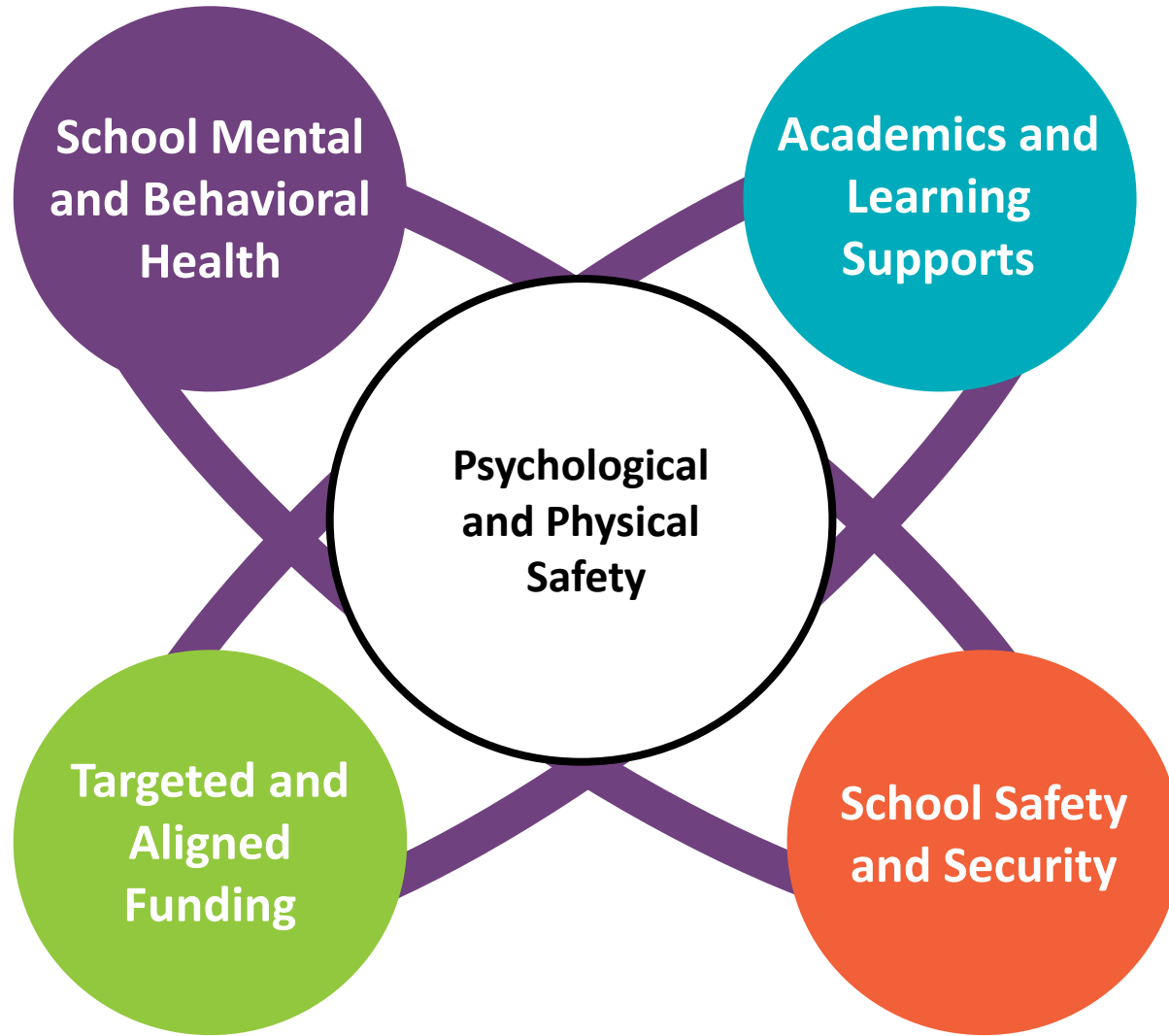


Reduce or Mitigate
Against Risk
Factors

Increase Promotive
and Protective
Factors

Resilience, Mental
Health, Healthy
Development,
Learning, and
Well-being

Grounding and Reflection: After SB 11 86R – Interconnected Responsibilities and Alignment Towards a Shared Statewide Goal



Increased coordination amongst school safety stakeholders



Increased data collection to drive continuous improvement

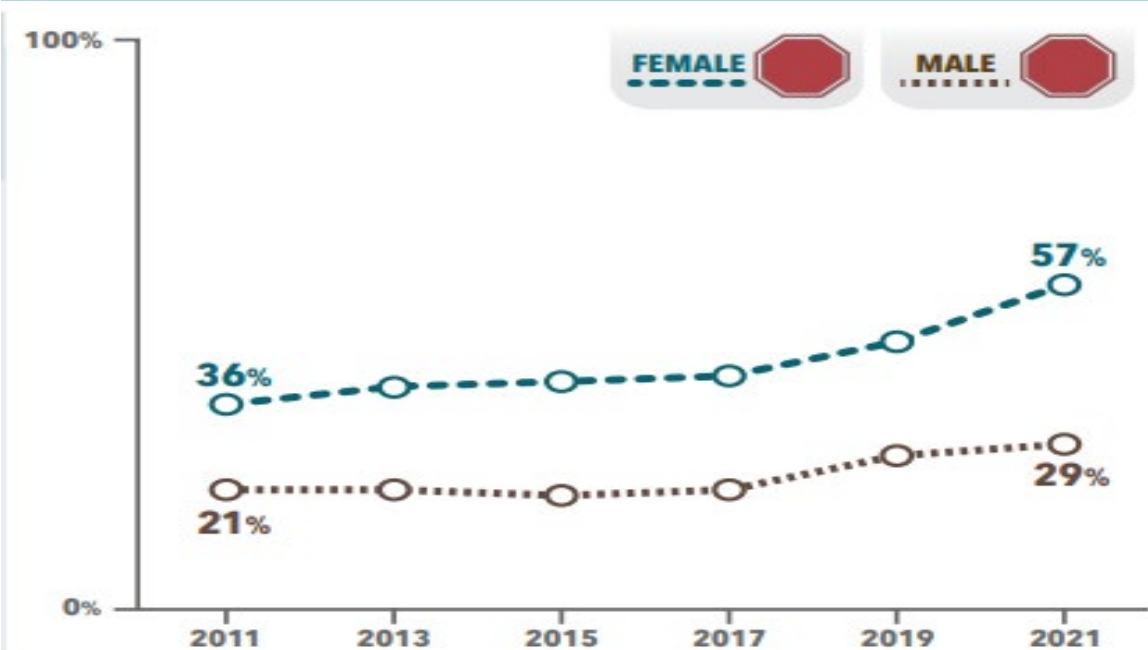


Increased support for and coordination within campuses

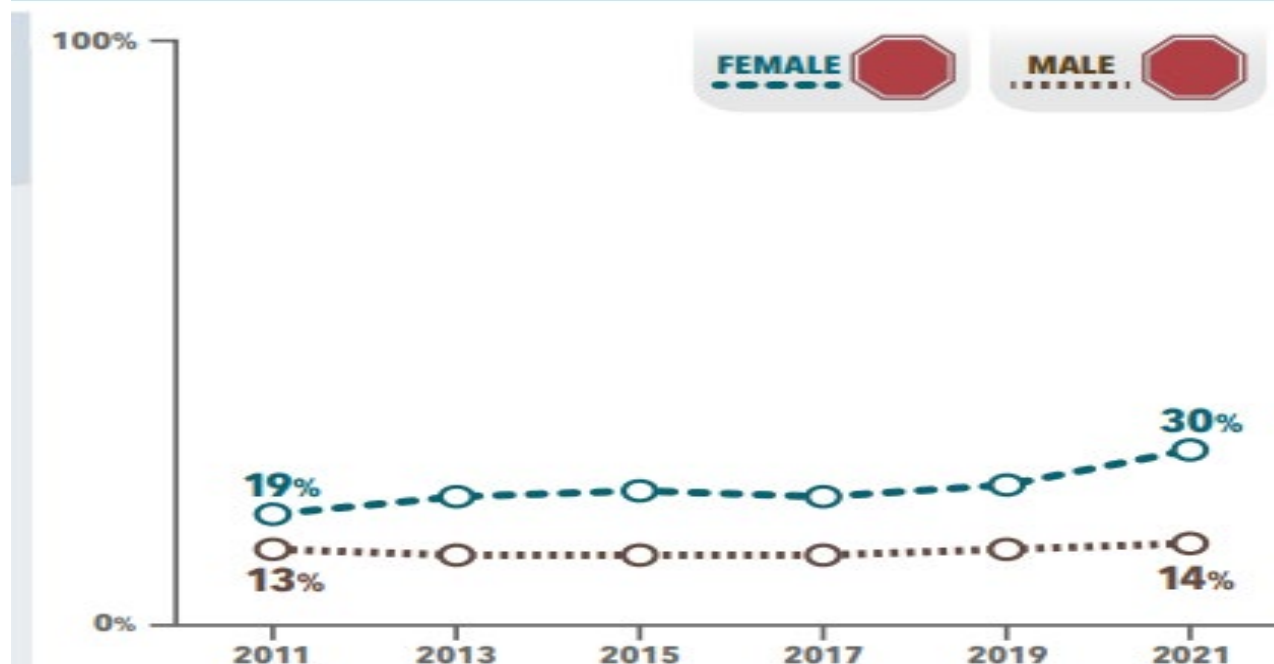
Youth Risk Behavior Survey Results - After COVID 19

Mental health concerns among youth are still on the rise after the pandemic.

Experienced Persistent Feelings of Sadness or Hopelessness during the Past Year, United States, YRBS, 2011-2021



Seriously Considered Attempting Suicide during the Past Year, United States, YRBS, 2011-2021

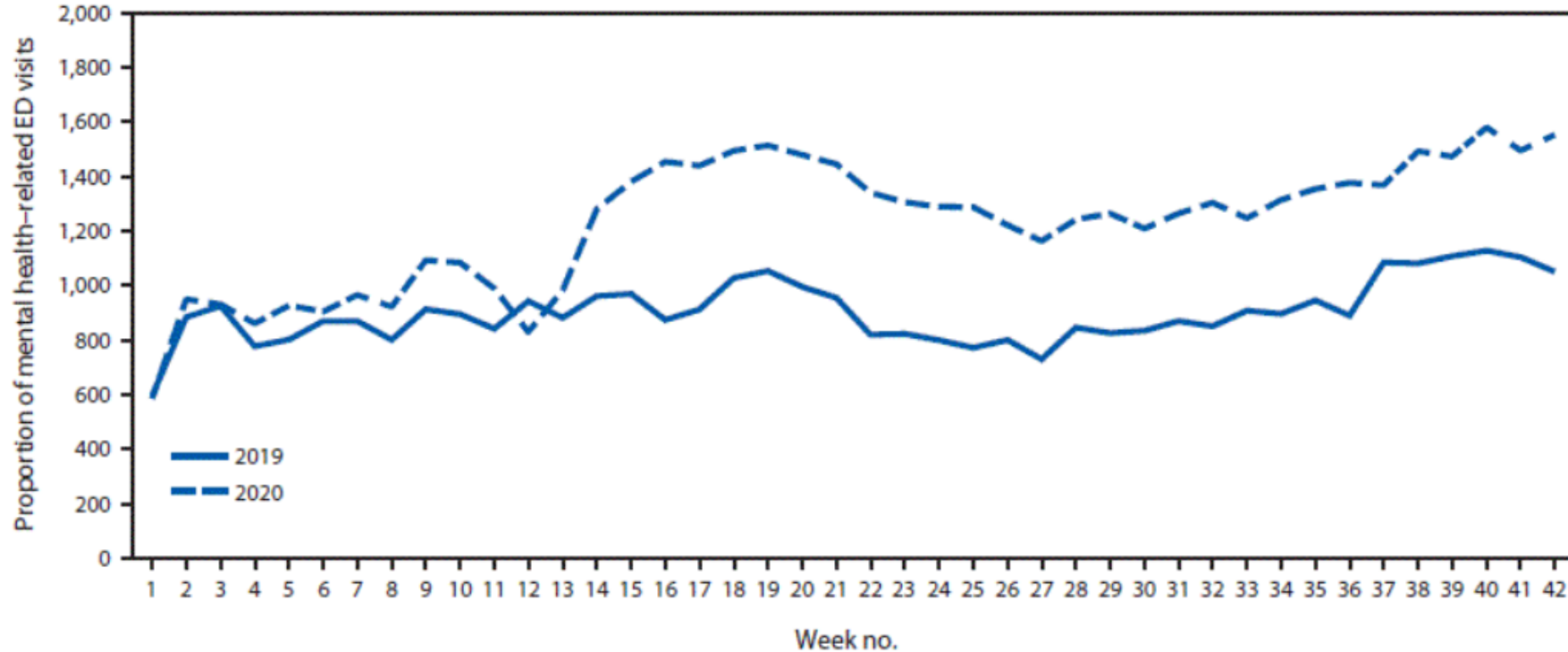


Sources: YRBS Texas Survey Data <https://healthdata.dshs.texas.gov/dashboard/surveys-and-profiles/yrbs>
 YRBS National Survey Data <https://yrbs-explorer.services.cdc.gov/#/>

Source: U.S. Surgeon General's Advisory Report, [Protecting Youth Mental Health](#), December 2022

Youth Mental Health Concerns - Impact During COVID 19

B. Proportion of mental health-related ED visits per 100,000 pediatric ED visits per week

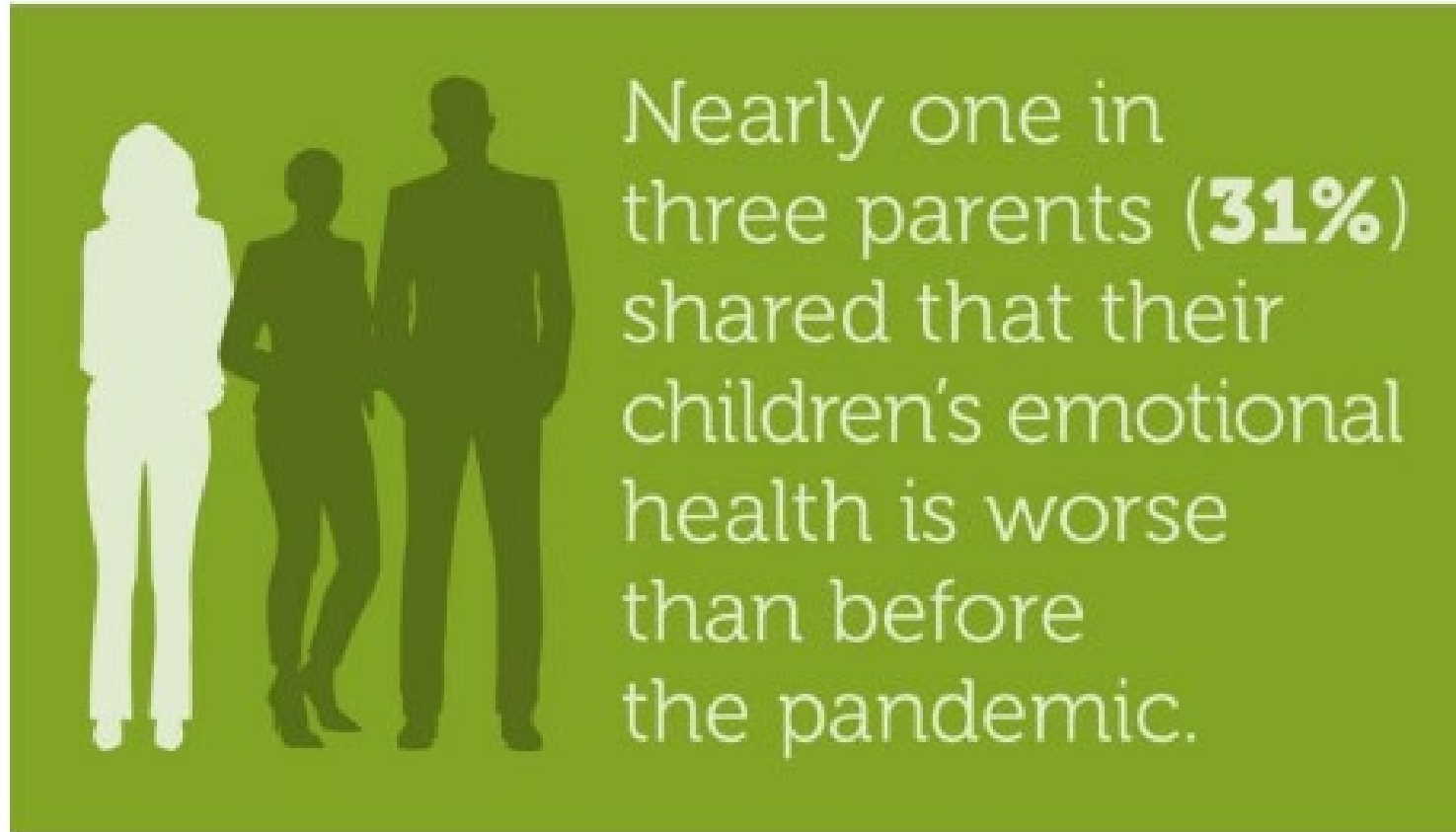


* Proportion of mental health-related ED visits = number of ED visits for children’s mental health/total number of pediatric ED visits x 100,000.

CDC data show an increase in pediatric mental health-related visits to hospital Emergency Departments (ED in 2020 compared to 2019, **increasing 24% for children aged 5-11 years and 31% for children aged 12 – 17 years.**

Key Source: [Morbidity and Mortality Weekly Report](#)

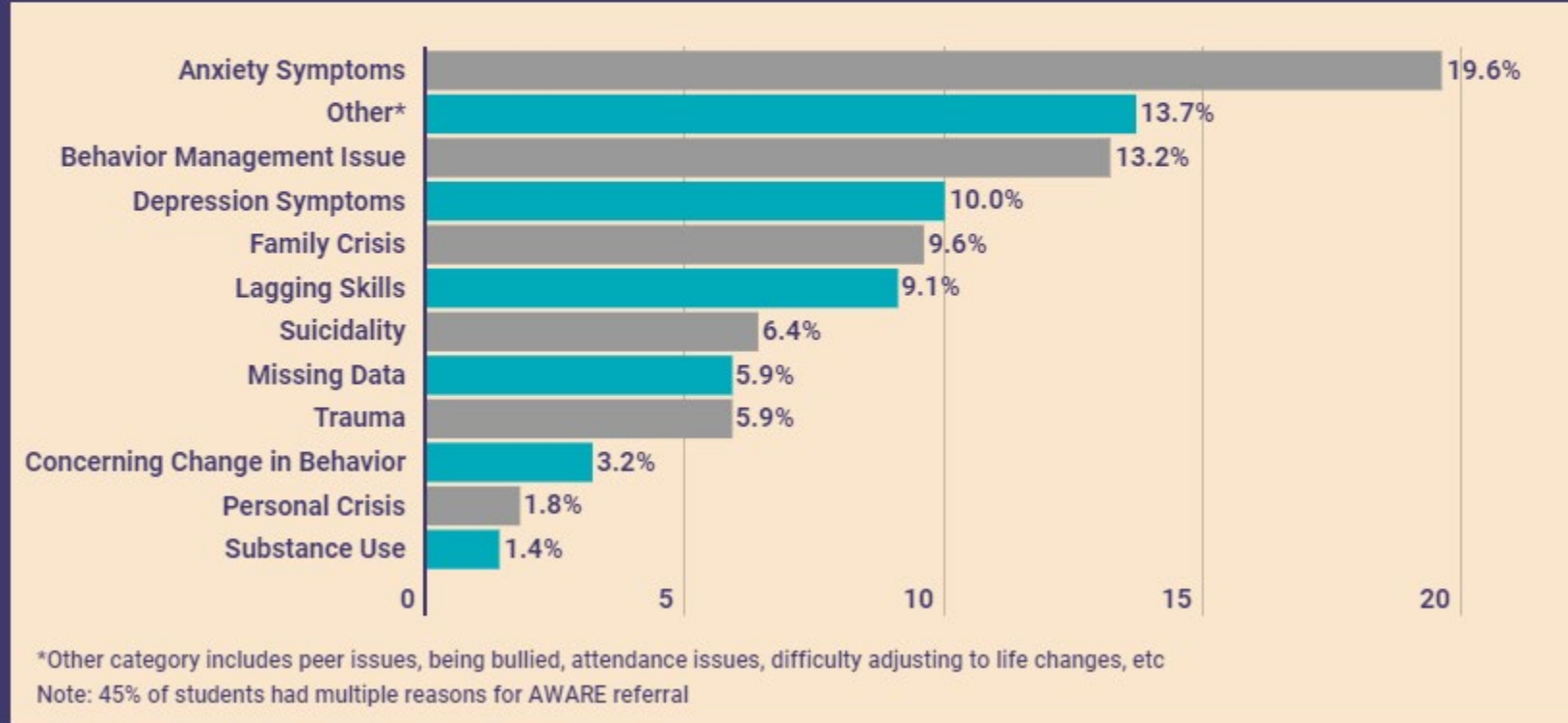
Reflection on the Data



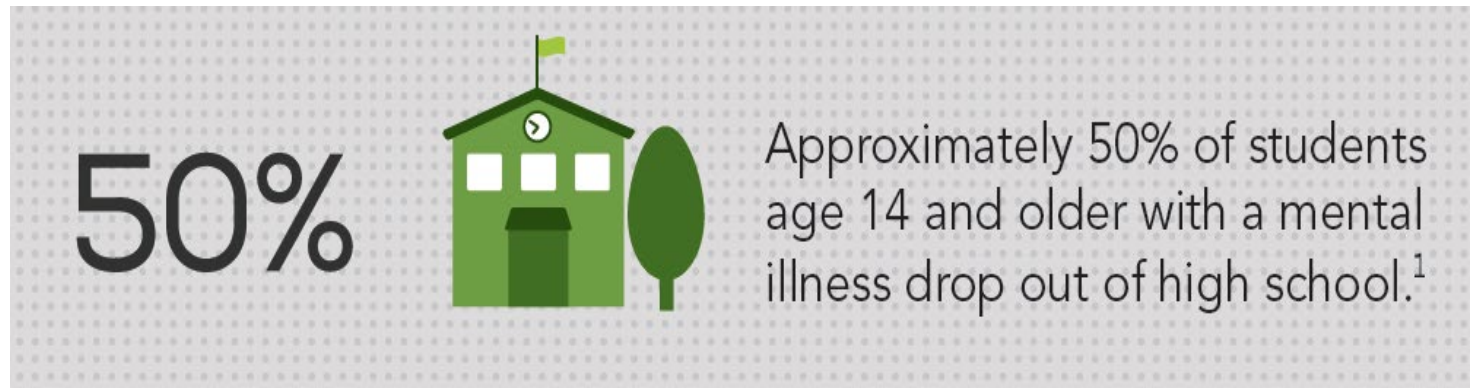
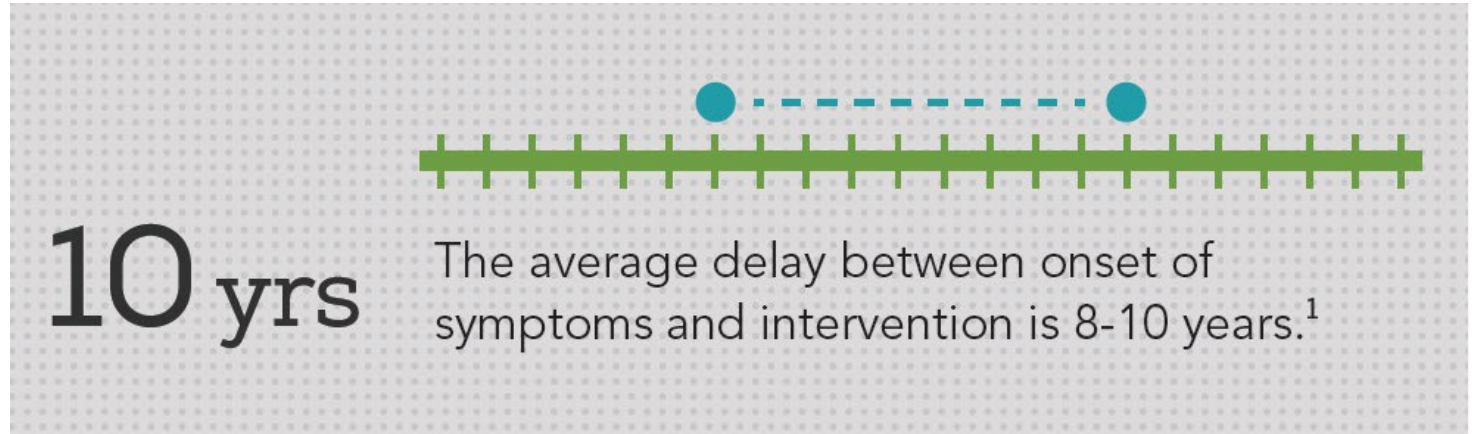
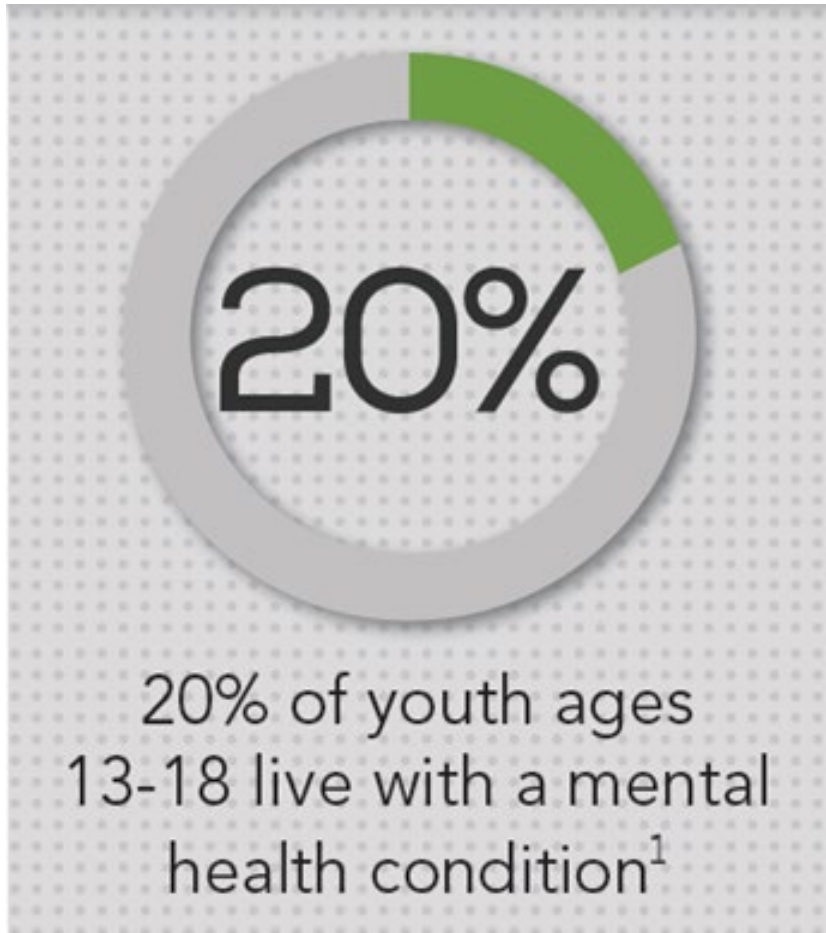
America's School Mental Health Report Card, February 2022. <https://hopefulfutures.us/>



Reasons for Referring Students to AWARE Supports



Student Mental Health Needs



Mental Health America

Warning Signs



Feeling very sad or withdrawn for more than 2 weeks (e.g., crying regularly, feeling fatigued, feeling unmotivated).



Trying to harm or kill oneself or making plans to do so.



Out-of-control, risk-taking behaviors that can cause harm to self or others.



Sudden overwhelming fear for no reason, sometimes with a racing heart, physical discomfort or fast breathing.



Not eating, throwing up or using laxatives to lose weight; significant weight loss or gain.



Severe mood swings that cause problems in relationships.



Repeated use of drugs or alcohol.



Drastic changes in behavior, personality or sleeping habits (e.g., waking up early and acting agitated).



Extreme difficulty in concentrating or staying still that can lead to failure in school.



Intense worries or fears that get in the way of daily activities like hanging out with friends or going to classes.

What can parents do?

4 Things Parents Can Do



Talk with your
pediatrician



Get a referral to a
mental health specialist



Work with
the school



Connect with
other families

¹ This document cites statistics provided by the National Institute of Mental Health. www.nimh.nih.gov

Follow Us!

 facebook.com/officialNAMI

 twitter.com/NAMIconnunicate

- What challenges do children & youth face today?
- How have things changed within the last few years in your field?
- What is YOUR biggest challenge in working with students today?
- What is your go to resource for help or referrals ?



Legislative Updates

88th Legislation Session

88th Legislative Session – Supportive Schools

Legislation:	Caption:
HB 728	Relating to the reporting of mental health and intellectual disability information with respect to certain children for purposes of a federal firearm background check.
HB 3186	Relating to youth diversion strategies and procedures for children accused of certain fine-only offenses in municipal and justice courts and related criminal justice matters; authorizing fees.
SB 26	Relating to local mental health authority and local behavioral health authority audits and mental and behavioral health reporting, services, and programs.
HB 2059	Relating to mental health first aid training provided by local mental health authorities and local behavioral health authorities.
HB 1, Rider 85	Relating to Fentanyl Contamination Training
HB 473	Relating to parental rights regarding a threat assessment of a student conducted by a public school’s threat assessment and safe and supportive school team.
HB 2100	Relating to eligibility requirements for student loan repayment assistance for certain mental health professionals.

88th Legislative Session

Legislation:	Caption:
SB 763	relating to allowing public schools to employ or accept as volunteers chaplains.
SB 798	Relating to the certification requirements for a public-school counselor.
HB 3	<p>Relating to measures for ensuring public school safety, including the development and implementation of purchases relating to and funding for public school safety and security requirements and the provision of safety-related resources.</p> <p>- Mental Health Training</p>

House Bill 728: Firearm Background Check Reporting



Amends the **Health and Safety Code Chapter 574** regarding “federal prohibited person information” and **required reporting by a court** with respect to an individual who is at least 16 years of age **when a court:**

- ✓ Orders a person to receive inpatient mental health services
- ✓ Acquits a person in criminal case by reason of insanity or lack of mental responsibility
- ✓ Commits a person determined to have an intellectual disability for long term placement in a residential care facility
- ✓ Determines a person is unfit to stand trial
- ✓ Finds a person entitled to relief from disabilities

And other provisions

House Bill 3186: Diversion Programs, Pages 1-5 and 15-17)



Adds Subchapter F, **Youth Diversion**, to Chapter 45 of the Code of Criminal Procedure cited: **The Texas Youth Diversion and Early Intervention Act.**

- ✓ Adds comprehensive youth diversion strategies and procedures for children accused of certain fine-only misdemeanors, other than traffic
- ✓ Each justice and municipal court **shall** adopt a **Youth Diversion Plan**
- ✓ Government entities **may** develop collaborative **municipal, county** and/or **regional** Youth Diversion Plans – including school collaboration
- ✓ Youth diversion plans may include an agreement with a service provider(s) **including schools to provide services for a diversion strategy**
- ✓ Youth must be offered a **diversion agreement**, with parent consent
- ✓ **Juvenile case managers** may be employed or jointly contracted by a school district, court, probation etc. **May jointly seek funding to execute**

Senate Bill 26: Local Mental and Behavioral Health Authority Programs and Services (Page 1)

Amends TEC §8.152. If a **local mental health authority** is unable to

- employ a professional who qualifies as a non-physician mental health professional (NPMHP) the authority may request a waiver from HHSC for approval to employ, for purposes of performing the functions and duties of a NPMHP (*regarding the NPMHP hired and placed in each ESC pursuant to an LMHA and ESC agreement- HB 19 86R*), a person who:

- is a **licensed master social worker**, as defined by Section 505.002, Occupations Code; or
- has been issued a **licensed professional counselor associate** license by the Texas State Board of Examiners of Professional Counselors

House Bill 2059: Mental Health First Aid Training (page 4)

Continues to authorize Mental Health First Aid Training at **no cost** for school district employees and school resource officers provided by local mental health authorities (LMHA) and local behavioral health authorities (LBHA) or their contractor trainers:



Adds employees of entities and more people who may receive **free MHFA training from the LMHA or LBHA or their contract trainers:**

- ✓ Open enrollment charter schools; Institutions of higher education; Private schools; Employees or contractors of child-care facilities; Youth; Individuals with direct and recurring contact with students; Contractors of public and private schools; Other people specified include: First Responders, military members, veterans, family members of military members and veterans, judges, attorneys.

House Bill 1, Rider 85: Fentanyl Contamination Training (TEA, Article III, pages 264, 265)



- (a) Included in amounts appropriated in Strategy B.2.2, Health and Safety is **\$2,611,722 in funds from the Opioid Abatement Account No. 5189** in fiscal year 2024:
- ✓ to provide training developed by **The University of Texas Health Science Center at San Antonio**
 - ✓ utilizing **Education Service Center (ESC)** staff to train **school district employees regarding the dangers of fentanyl contamination.**

House Bill 473: Parent engagement in a threat assessment

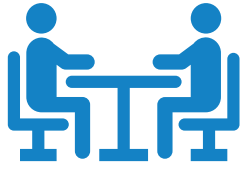


Before a team may conduct a threat assessment of a student, the team must notify the parent of or person standing in parental relation to the student regarding the assessment. In conducting the assessment, the team shall provide an opportunity for the parent or person to: (1) participate in the assessment, either in person or remotely; and (2) submit to the team information regarding the student.



After completing a threat assessment of a student, the team shall provide to the parent of or person standing in parental relation to the student the team's findings and conclusions regarding the student.

HB 2100: Mental Health Professionals Loan Repayment Program



A mental health professional working in Texas may apply for loan repayment assistance- a state strategy addressing the workforce shortage



Requires completing 1, 2, 3, 4, 5 consecutive years working in a designated mental health workforce shortage area



Must provide services to Medical Assistance Program recipients, low-income child health care program recipients, patients in a state hospital, individuals receiving community-based mental health care from a local mental health authority (LMHA)

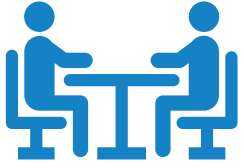
SB 763: School Chaplains



Adds TEC chapter 23 titled School Chaplains

- ✓ A school district or open-enrollment charter school may employ or accept as a volunteer a chaplain to provide support, services, and programs for students as assigned by the board of trustees of the district or the governing body of the school.
- ✓ A chaplain employed or volunteering is not required to be certified by the State Board for Educator Certification.
- ✓ Includes compliance with required criminal background checks.
- ✓ Allows use of the School Safety Allotment under TEC Section 48.115(b) to fund services and programs of the School Chaplain, including mental and behavioral health services and supports.

SB 798: School Counselors



The qualifications for certification as a school counselor may not include a requirement that a candidate for certification have experience as a classroom teacher.



The State Board of Educator Certification is required to propose rules as necessary to implement by January 1, 2024.



Author's statement of intent: *Currently many school districts have classroom teaching requirements to become a school counselor in many public schools. These hiring requirements have created an unnecessary barrier to entry for prospective school counselors.*

- ✓ Requires a district employee who regularly interacts with students to complete an evidence-based mental health training program
- ✓ TEA will provide an allotment to each school district to assist the district with compliance
- ✓ The State Board for Educator Certification will propose rules to allow educators to receive credit toward their continuing education requirements
- ✓ The commissioner will adopt rules related to **travel and training reimbursement**

House Bill 3: School Safety Allotment (Sect. 23, Pg. 30)

A school district is entitled to an annual allotment equal to the sum of the following amounts or a greater amount provided by appropriation:



1. \$10 for each student in average daily attendance, plus \$1 for each student in average daily attendance per every \$50 by which the district's maximum basic allotment exceeds \$6,160, prorated as necessary; and
2. \$15,000 per campus

Increases ongoing school safety funding by \$300 million per biennium (about \$150 million per year) through the school safety allotment and technical support/oversight programs.

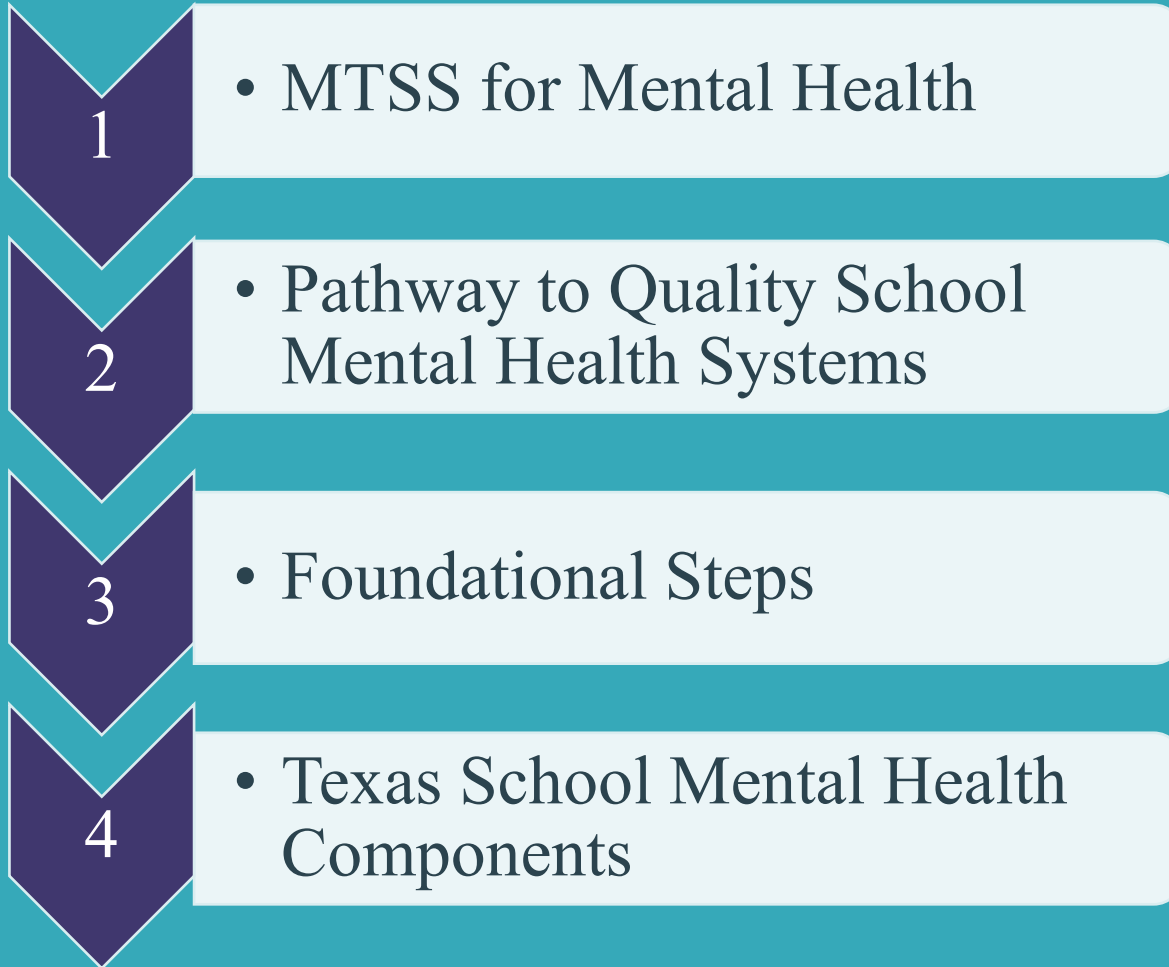
Other Mental Health Legislative Activities and Funding

- ✓ **1st Children's Mental Health Strategic Plan** - to be developed
- ✓ **Funding appropriated to HHSC for various new or expanded mental health initiatives-** i.e. Additional funding for: More purchased psychiatric beds including rural, crisis stabilization/respice for youth, youth mobile crisis outreach teams- 7 new teams, Rider 56- tele psych for rural hospitals, new Multisystemic treatment teams, HB 13 \$ for innovation grants - there will be an RFP for several community MH grant programs for communities, new behavioral health facility for Uvalde.
- ✓ **Expansion of TCHATT-** Available to each campus that wants it - \$71,041,395 each year of biennium
- ✓ **MH Workforce Programs-** increased funds to THECB for high need related careers, ie. fellowships for psychiatrists, nurses, loan repayment etc.



Mental Health Resources

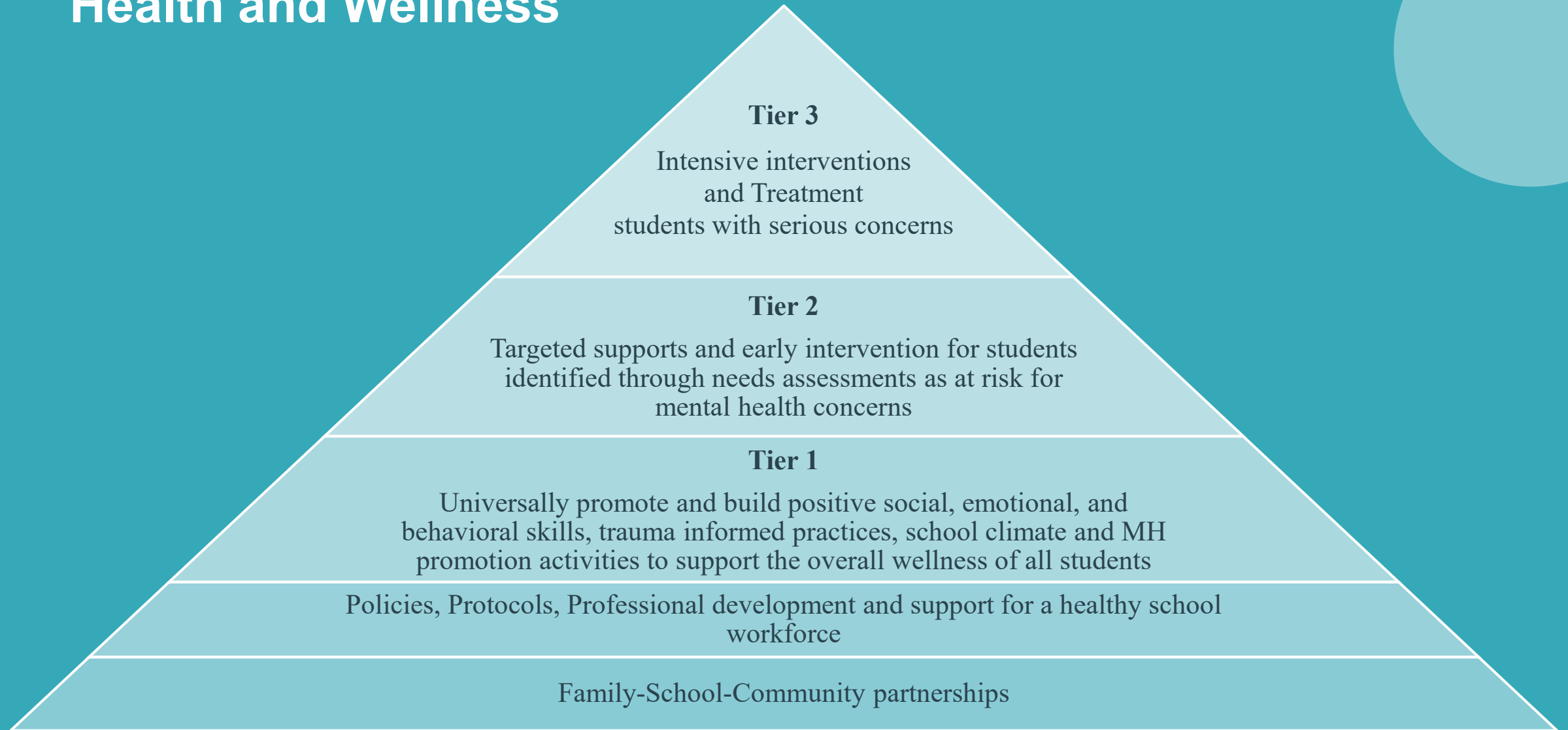
Texas School Mental Health Framework



Texas School Mental Health Framework Essential Elements for a Safe & Supportive School



Multitiered System of Supports (MTSS) for Mental Health and Wellness



PATHWAY TO QUALITY SCHOOL MENTAL HEALTH

**TEAMING &
PLANNING**

**NEEDS ASSESSMENT &
RESOURCE MAPPING**

**EARLY
IDENTIFICATION
& SCREENING**

**MENTAL
HEALTH
PROMOTION &
PREVENTION**

**EARLY
INTERVENTION &
ACCESS TO SPECIALIZED
SERVICES**

**FUNDING &
SUSTAINABILITY**

**MONITORING
PROGRESS &
MEASURING
IMPACT**

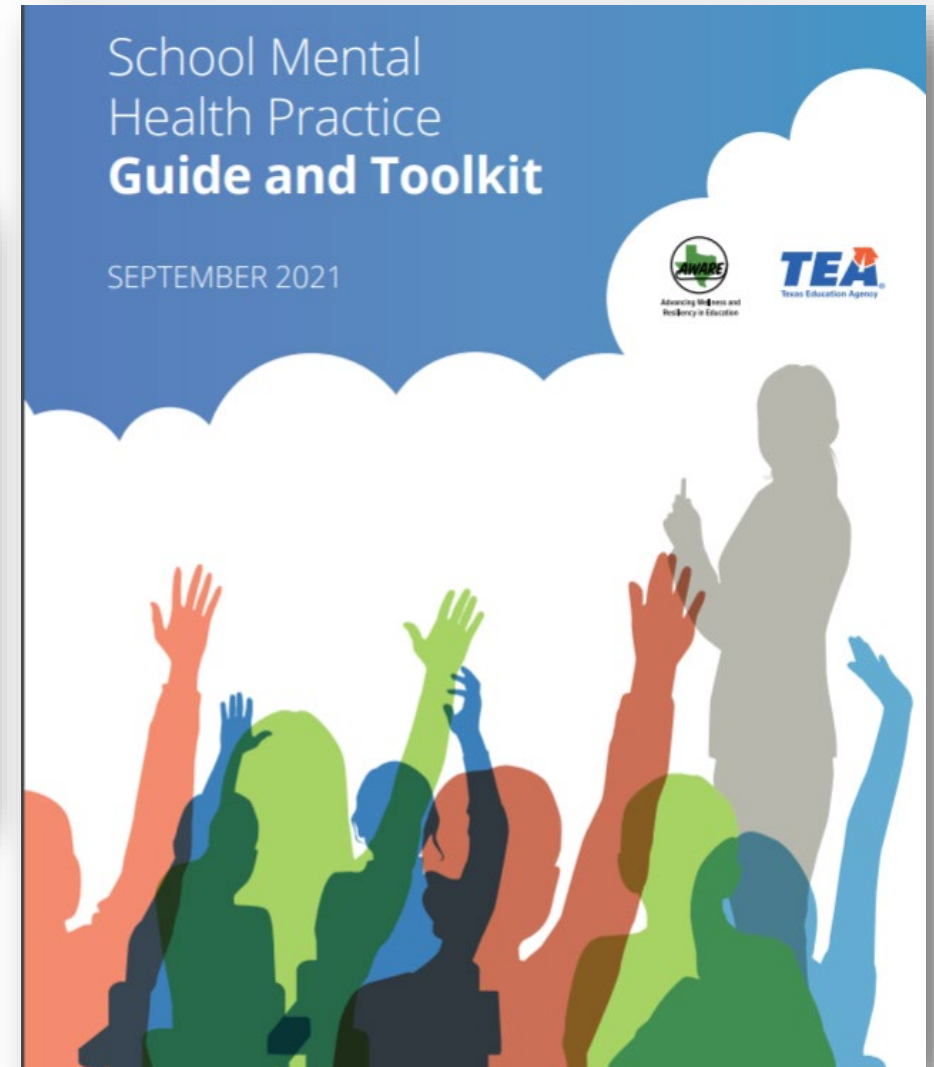
Texas School Mental Health Website

Toolkit

The Texas School Mental Health Practice Guide and Toolkit provides information, considerations, resources, and tools for schools. The purpose is to help Local Education Agencies plan and provide a comprehensive school mental health system. This toolkit supports schools with readiness to plan interventions, services and supports for the Safe and Supportive School Program. Various resources and tools can be accessed in the toolkit library.

[DOWNLOAD THE TOOLKIT](#)

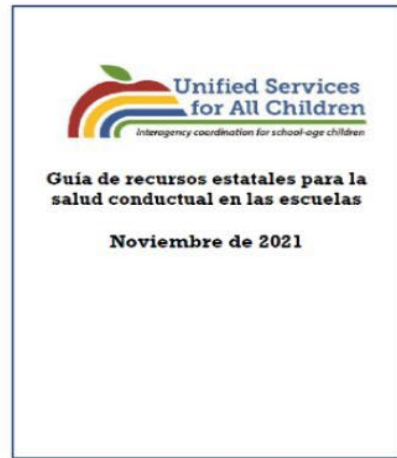
<https://schoolmentalhealthtx.org/>



Texas School Mental Health Toolkit

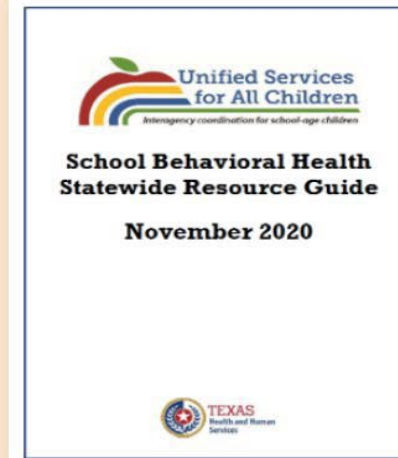
FILTER BY CATEGORY

- Assessing Fidelity and Quality (4)
- Community-based Resources (10)
- Consent and Referral Forms (6)
- Resiliency and Trauma-Informed Schools (3)
- School Climate (2)
- Screening and Needs Identification (8)
- Student Support and Care Management Tools (10)
- Suicide Prevention (3)
- Systems Planning Tools (9)



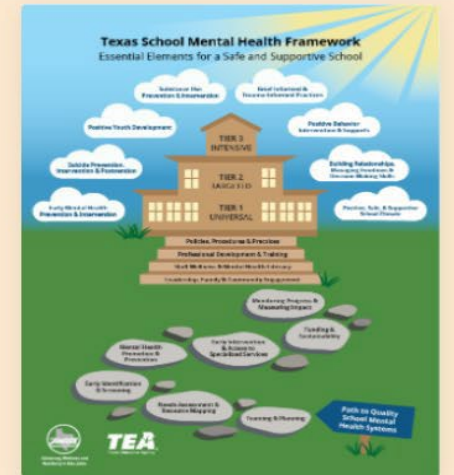
COMMUNITY-BASED RESOURCES

USAC School Behavioral Health Statewide Resource Guide Spanish



COMMUNITY-BASED RESOURCES

USAC School Behavioral Health Statewide Resource Guide



SYSTEMS PLANNING TOOLS

Texas School Mental Health Framework

This handout provides a...

Senate Bill 11, School Mental Health Resources Inventory Requirements, TEC 38.251- 253

Develop a list of Regional and **statewide resources** available to school districts to address mental health of students, including:



**Training +
Technical
Assistance**



**School-based
programs
(including CIS)**



**Community-
based programs**



**School-based
mental health
providers**



**Public + private
funding sources**



- TEA, ESCs, and state partners developed a new resource database for Texas LEAs. – pursuant to SB 11.
- **NEW! Live and searchable tool launched May 2022.**
- Database includes information for **1367 unique mental health resources identified to date** by ESCs, TEA, and state partners as available to Texas schools.
- Strengthens access to the state’s mental health-related resources for Texas schools, and families.

- Region 1: Edinburg
- Region 2: Corpus Christi
- Region 3: Victoria
- Region 4: Houston
- Region 5: Beaumont
- Region 6: Huntsville
- Region 7: Kilgore
- Region 8: Mount Pleasant
- Region 9: Wichita Falls
- Region 10: Richardson
- Region 11: Fort Worth
- Region 12: Waco
- Region 13: Austin
- Region 14: Abilene
- Region 15: San Angelo
- Region 16: Amarillo
- Region 17: Lubbock
- Region 18: Midland
- Region 19: El Paso
- Region 20: San Antonio



**Mental health
is critical to
children's
success in
school and life.**

[READ MORE](#)



<https://schoolmentalhealthtx.org/>

Review the Sessions from the 2023 Mental and Behavioral Health Webinar Series

Session 1 (1/11/2023) - Health and Human Services Commission (HHSC) Prevention and Behavioral Health Promotion Resources +

Session 2 (2/8/2023) - Community Resource Coordination Groups (CRCG) +

Session 3 (3/8/2023) - Texas School Mental Health Resource Database +

Session 4 (4/12/2023) - Securing Community Partnerships +

Session 5 (5/10/2023)- Texas Child Health Access Through Telemedicine (TCHAT) +

What topics would you like to see addressed
in the future?

What other topics would you like to see for Webinars?

Activity – School MH Database

Find the following:

- ✓ The local mental health authority that serves your county
- ✓ The education service center that services your county or school district
- ✓ Is your organization listed on the database?

schoolmentalhealthtxdatabase.org



New Resource: Best Practices List

Filter By Component ▾ Filter By Resource Type ▾

<p>Wraparound Planning and RENEW</p> <p>A team-based planning process that supports coordinated family-driven care</p> <p>COMPONENTS</p> <p>Early Mental Health Prevention and Intervention</p> <p>RESOURCE TYPES</p> <p>Intervention</p>	<p>NAMI Basics</p> <p>A parent-led education and support group for parents of children and young adults with mental health concerns</p> <p>COMPONENTS</p> <p>Early Mental Health Prevention and Intervention</p> <p>RESOURCE TYPES</p> <p>Intervention</p>	<p>The Emotional Backpack</p> <p>A grief-informed and trauma-informed program currently offered through Mental Health America of Greater Houston</p> <p>COMPONENTS</p> <p>Grief and Trauma-Informed Practices</p> <p>RESOURCE TYPES</p> <p>Training</p>
<p>Strategic Memory and Reasoning Training (SMART)</p> <p>A neuroscience-based curriculum designed to improve critical thinking in students 6th-9th grade</p> <p>COMPONENTS</p> <p>Positive Youth Development</p> <p>RESOURCE TYPES</p> <p>Training</p>	<p>Soar With Wings</p> <p>Provides standards-aligned digital resources that incorporate academics and fun while building key social and emotional skills</p> <p>COMPONENTS</p> <p>Building Relationships, Managing Emotions, and Decision-Making Skills</p> <p>RESOURCE TYPES</p> <p>Supplemental</p>	<p>Second Step®</p> <p>A variety of programs that help make social-emotional learning (SEL) part of children's daily lives, in and outside the classroom</p> <p>COMPONENTS</p> <p>Positive Youth Development</p> <p>RESOURCE TYPES</p> <p>Intervention</p>
<p>Ripple Effects</p> <p>Ripple Effects delivers equity-driven, digital social and emotional learning (SEL)</p> <p>COMPONENTS</p> <p>Early Mental Health Prevention and Intervention</p> <p>RESOURCE TYPES</p> <p>Intervention</p>	<p>Project Towards No Drugs</p> <p>An interactive classroom-based substance abuse prevention program</p> <p>COMPONENTS</p> <p>Substance Use Prevention and Intervention</p> <p>RESOURCE TYPES</p> <p>Intervention</p>	<p>Positive Action</p> <p>Positive Action is based on the intuitive philosophy that we feel good about ourselves when we do positive actions</p> <p>COMPONENTS</p> <p>Positive Behavior Interventions and Supports</p> <p>RESOURCE TYPES</p> <p>Intervention</p>

Best Practices List

- Provides information on programs, practices, and trainings across the eight school MH components (TEC 38.351)
- Provides links to TEA-supported best practice registries
- Filter by component or by resource type
- Collaboration between TEA, HHSC, ESCs, AWARE, and MHTTC
- Continuing to expand and grow!



Suicide Prevention Training Resource Online- FREE

<https://TexasSuicidePrevention.org>



Support ▾

Resources ▾

Training ▾

About Us ▾



AS+K? Basic Gatekeeper Training

Welcome to the new AS+K? Basic Course. This course updates the original ASK? course is approximately 1 hour in length. It is followed by a 10 question quiz. This course is suited for persons who require suicide prevention gatekeeper skills for their communities and employers. It has been designed to meet the requirements for Texas and Texas educators. This online training is intended to meet Texas K-12 public school suicide prevention training requirements and other suicide prevention training needs.

The original AS+K? curriculum is listed on the SPRC resources and programs page:

<http://www.sprc.org/resources-programs/ask-about-suicide-save-life>

What is this course about?

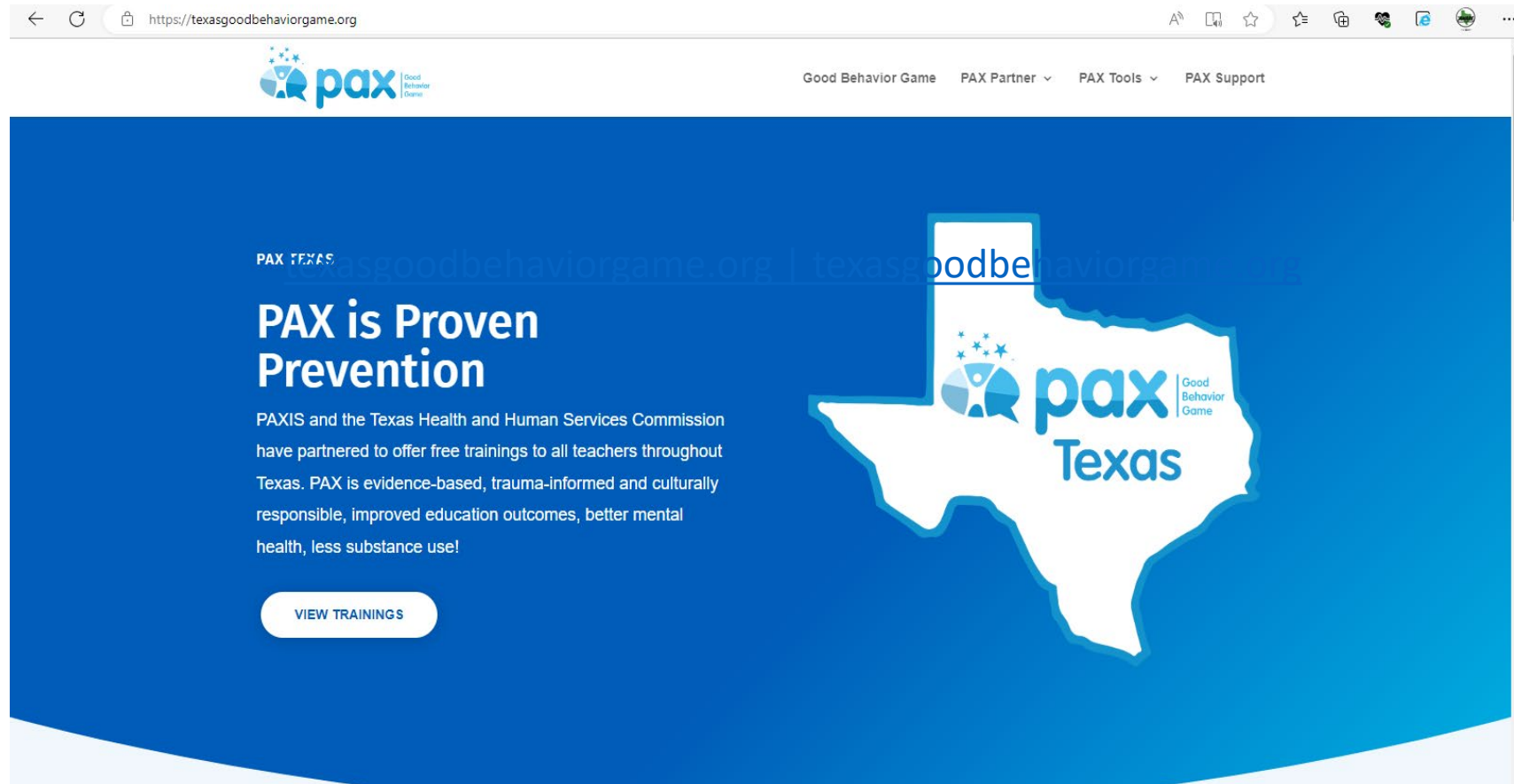
AS+K? About Suicide To Save A Life (Basic) provides participants with an overview of the basic epidemiology of

Donate Now

Volunteer



PAX Good Behavior Game



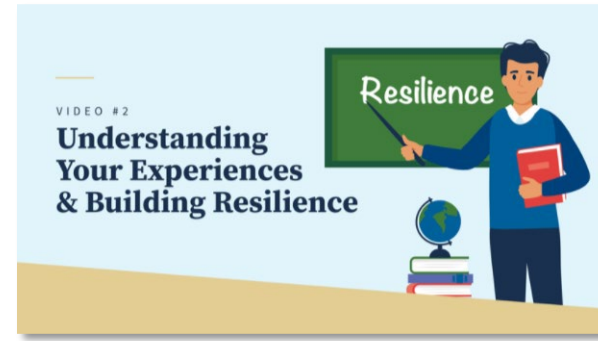
LMHA and ESC Partnerships



HB 19, 86R, Places a Mental Health Professional from the Local Mental Health Authority (LMHA) in each Education Service Center (ESC) as a mental health resource for schools.

- Interagency agreement required between ESCs and LMHAs
- Providing training in Mental Health First Aid and trauma informed practices
- Annual report submitted to the Governor, Lieutenant Governor, Legislature, and Commissioner by HHSC.

TEA's Grief and Trauma-Informed Practices Learning Series for Educators: 2020



[Access Project Restore to Get Started!](#)

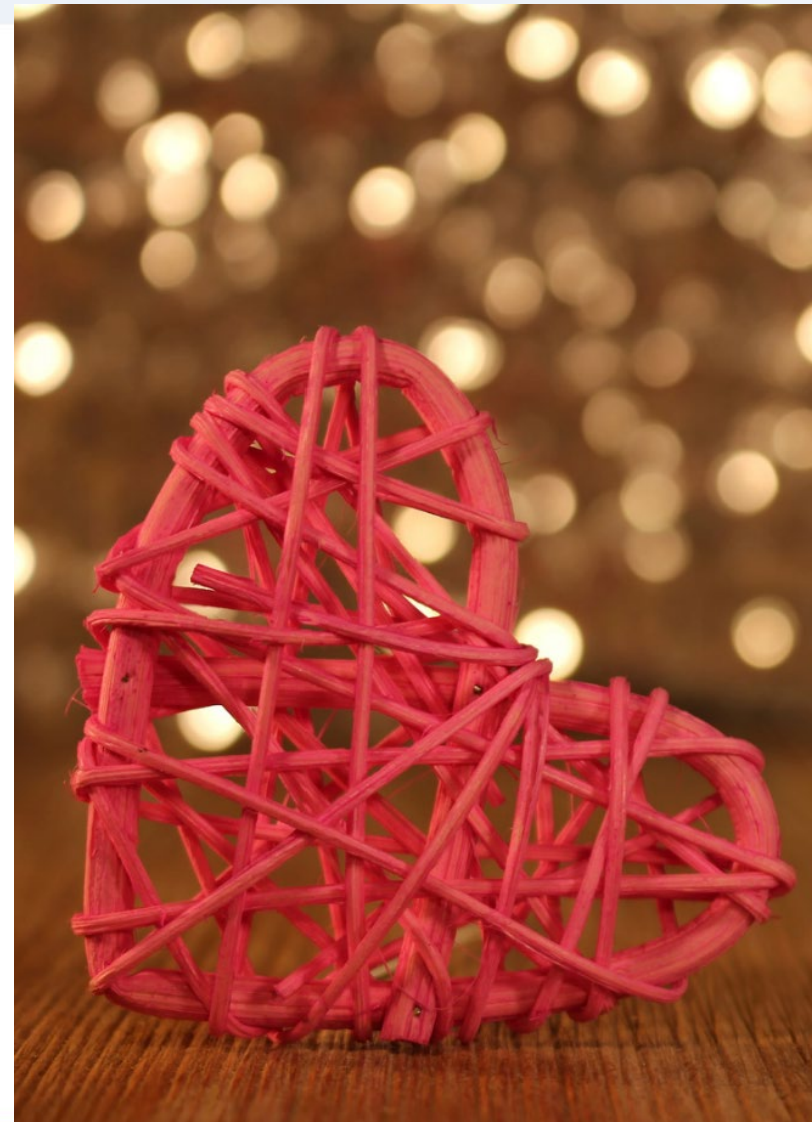
Each Education Service Center has been trained as TIC master trainers

Objectives:

- Learn how trauma affects educator wellness & how can schools address it
- Discover Stress Management and Resiliency Strategies (SMART)
- Develop a Wellness Plan
- Building practices to support trauma-informed classrooms and campuses



The University of Texas at Austin
Texas Institute for Excellence
in Mental Health
Steve Hicks School of Social Work



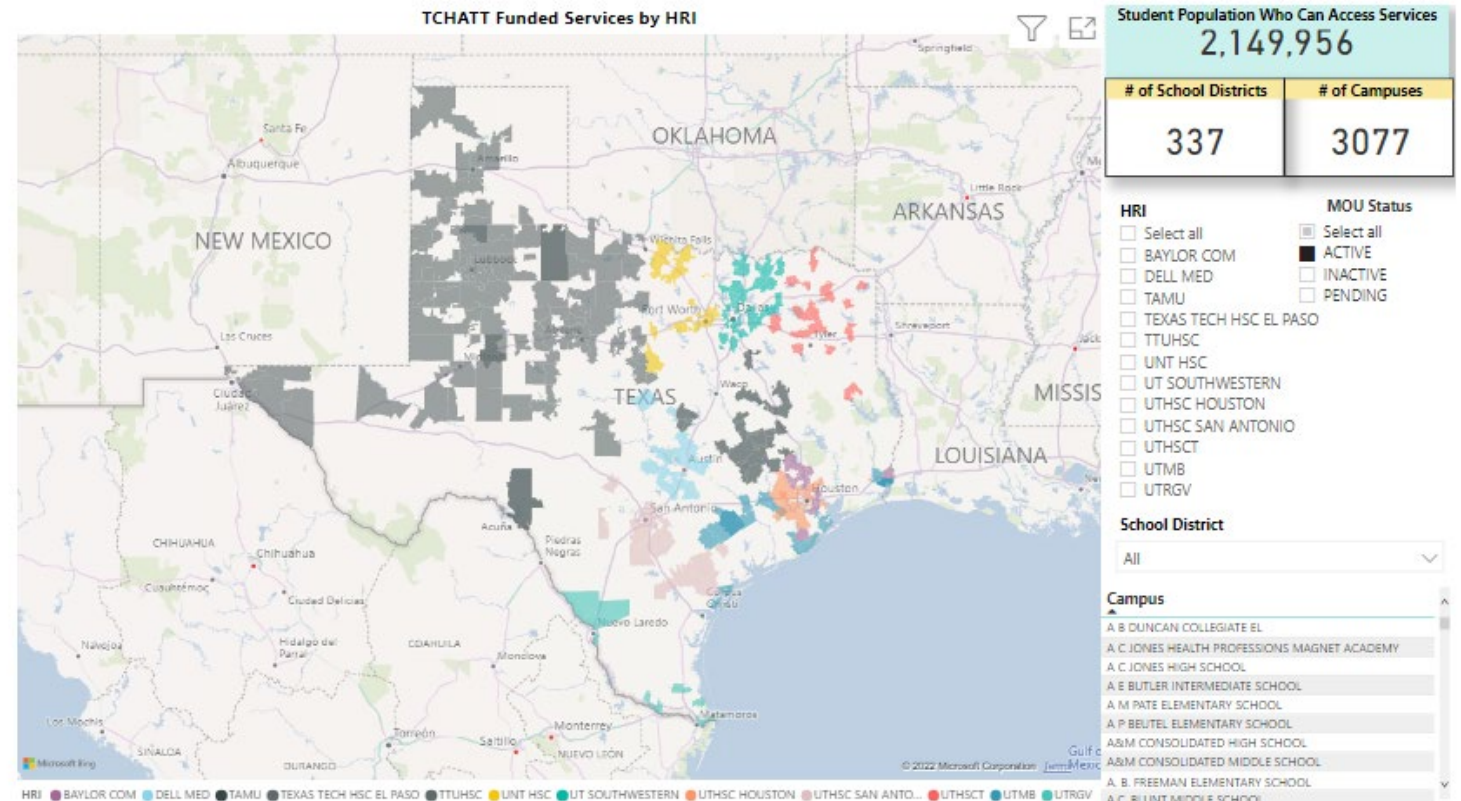
Texas Child Health Access Through Telemedicine (TCHAT) - Partnerships

TCHAT is a telemedicine program funded by the state through SB 11, 86R that created the Child Mental Health Care Consortium.

TEA collaborates and promotes TCHAT access through our work with the **Statewide Behavioral Health Coordinating Council**, **ESC School Mental Health Professional Learning Community**, and **Project AWARE Texas**.

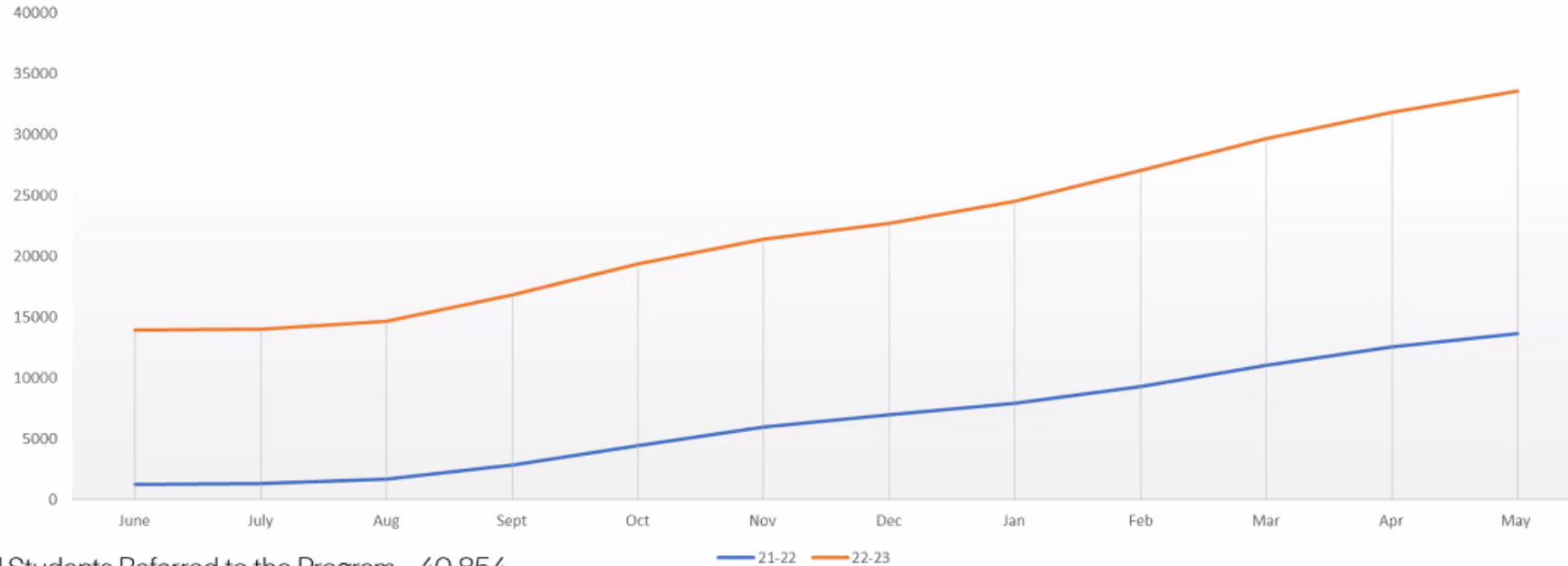
To receive updates on the data visit: <https://tcmhcc.utsystem.edu/tchat/>

- To date, more than 2,149,956 Texas students and their families now have access to multi-disciplinary teams of mental health professionals in schools due to this telemedicine program in schools.
- There are MOUS between TCHAT providers and 337 school districts, covering 3077 campuses.



TCHATT Services Since Launch through May 2023

TCHATT Services Since Program Start



Total Students Referred to the Program – 40,854

Students Served – 23,497

Sessions with Students – 89,204

* this data is preliminary and is subject to change



tcmhcc



Texas Child Mental Health Care Consortium










Fentanyl Response Communications Toolkit

[Fentanyl Response Communications Toolkit | Texas Education Agency](#)

Popular Applications [AskTED](#) [ECOS for Educators](#) [Grant Opportunities](#) [Secure Applications](#) [TEAL Login](#) [TSDS](#) [Help Desk](#)

 [Search](#) 

[A - Z Index](#) [Contact](#) [Employment](#) [Sign Up for Updates](#) [TEA Correspondence](#)

 About TEA	 Texas Schools	 Academics	 Finance & Grants	 Reports & Data	 Student Assessment	 Texas Educators
--	--	--	---	---	---	--

[Home](#) / [Texas Schools](#) / [Health, Safety, & Discipline](#) / [Safe and Supportive Schools](#)

Fentanyl Response Communications Toolkit

[◀ Back to Student & Staff Health Resources](#)

The Fentanyl Response Communications Toolkit is designed to provide communications resources and support to school systems in their efforts to educate their school communities on the growing dangers of fentanyl.

Safe and Supportive Schools

[Fentanyl Response Communications Toolkit](#)

[School Safety Resources](#)



Safe and Supportive Schools



Health, Safety, & Discipline

Safe and Supportive Schools

[Fentanyl Response Communications Toolkit](#)

[School Safety Resources](#)

Student Discipline

[Child Abuse Prevention Overview](#)

[Coordinated School Health](#)

[Human Trafficking](#)

[Physical Fitness Assessment](#)

[Pregnancy Related Services](#)

[Restorative Discipline Practices](#)

SSSP Data Collection Instrument Samples

- [2022-2023 School Year](#)
- [SSSP Data Collection Tool](#)



To Promote Student Mental Health and Wellness- Partnerships and Collaboration is Key!



Inter-agency
Collaboration

Intra-agency
Collaboration

Thank you for all that you do!

Discussion
and
Questions



Thank You!

Visit

School Mental Health Texas

<https://schoolmentalhealthtx.org/>

**More resources
Coming Soon!**

STAY INFORMED

Sign up to receive helpful resources and updates

TEA
Texas Education Agency

QR code

The graphic features a green background with a blue border. At the top right is the TEA logo. The main text 'STAY INFORMED' is in large, bold, blue letters. Below it, the text 'Sign up to receive helpful resources and updates' is in a smaller blue font. A QR code is centered at the bottom. To the right, there is an illustration of a blue envelope with a white paper inside, a blue paper airplane, and a red notification bell icon.